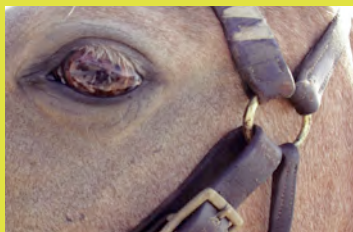
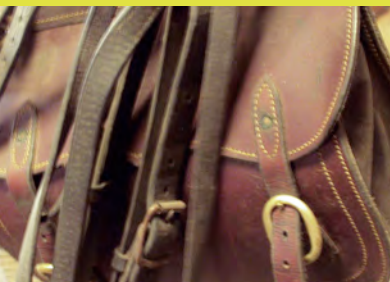


# Burnelee Excursions ON HORSEBACK



Experience the unique beauty of the Australian countryside by riding on horseback through our 3500 acre property on the outskirts of Canberra.

Enjoy the thrill of mustering sheep and cattle, or viewing Australian wildlife in 1000 acres of natural bushland.





Burnelee is located 30 minutes from Canberra, between Murrumbateman and Gundaroo.

We have a variety of horses to suit riders of all levels of experience, beginners are welcome. Each ride is accompanied by an experienced instructor, with fun and safety our top priorities.

A regular ride is held on Saturday afternoons, with group and full day rides also available on request.

Book a ride now at Burnelee Excursions on Horseback for a taste of country life.

[www.burnelee.com.au](http://www.burnelee.com.au)

For bookings and enquiries call Lindsey & Christine Butt on Tel 02 6227 5850

